

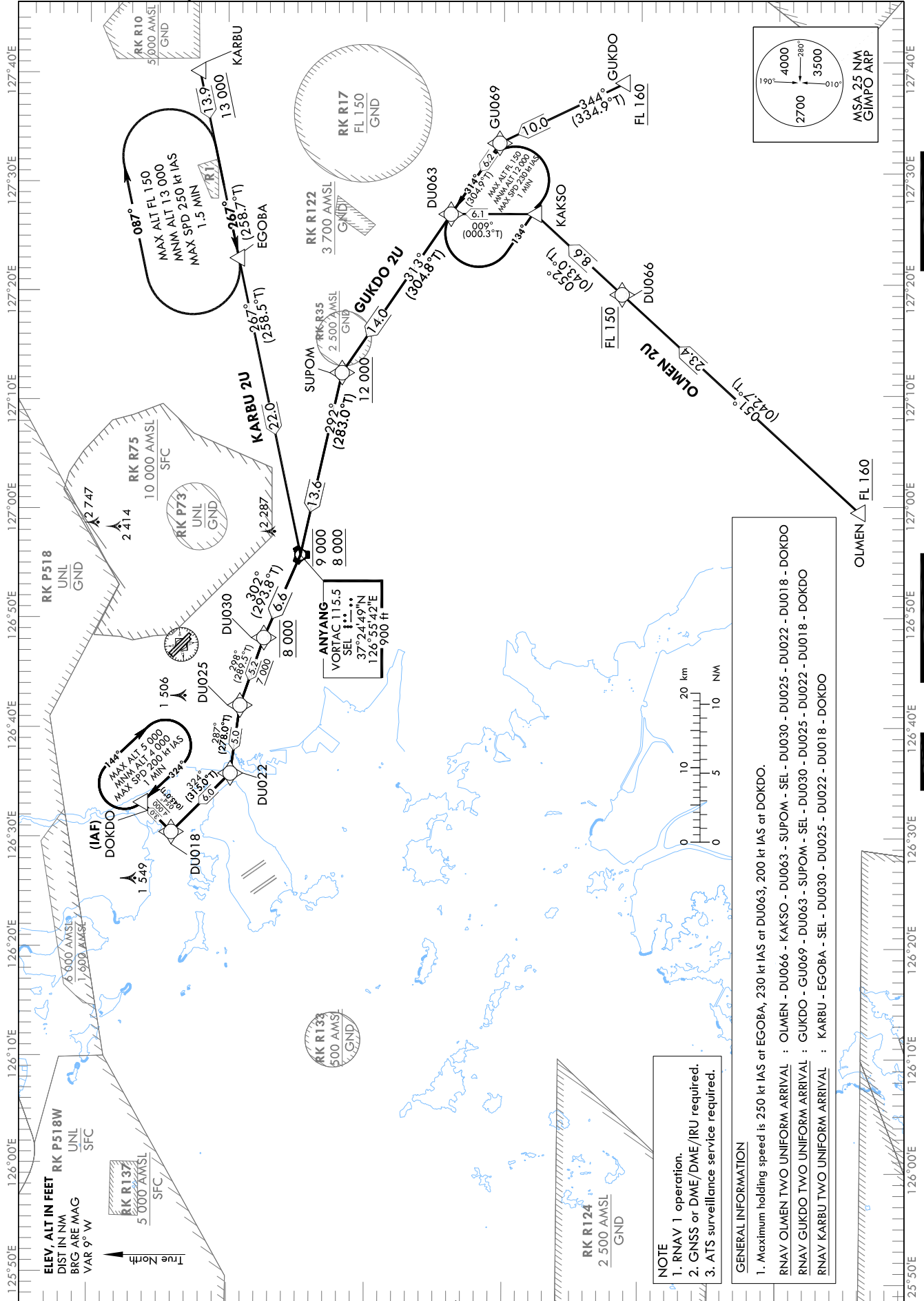
STANDARD ARRIVAL CHART
INSTRUMENT (STAR) - ICAO

TRANSITION ALT 14 000
TRANSITION LVL FL 140

SEOUL APP 119.75
119.1
GIMPO TWR 118.1
118.05

SEOUL/Gimpo Intl(RKSS)
RWY 14L/R
RNAV OLMEN 2U
RNAV GUKDO 2U, RNAV KARBU 2U

Note : Arrival under ICAO Flight Procedures.



Change : Information of ALT restriction for holding procedure, Withdrawal of unnecessary airways and Establishment of SEL VORTAC.

SEOUL/Gimpo Intl(RKSS)
RWY 14L/R
RNAV OLMEN 2U, RNAV GUKDO 2U

AERONAUTICAL DATA TABULATION

Standard Instrument Arrival Procedure Coding Tables

RNAV OLMEN 2U

Serial Number	Path Descriptor	Waypoint Identifier	Fly-over	Course/Track °M(°T)	Distance (NM)	Turn direction	Altitude (ft)	Speed (kt)	Coordinates	VPA/RDH	Navigation specification	Remarks
001	IF	OLMEN	-	-	-	-	+FL 160	-	36°44'13.4"N 126°59'27.6"E	-	RNAV 1	-
002	TF	DU066	-	051 (042.7)	23.4	-	@FL 150	-	37°01'25.6"N 127°19'16.4"E	-	RNAV 1	-
003	TF	KAKSO	-	052 (043.0)	8.6	-	-	-250	37°07'44.6"N 127°26'37.4"E	-	RNAV 1	Bank angle 25°
004	TF	DU063	-	009 (000.3)	6.1	-	-	-250	37°13'49.2"N 127°26'39.5"E	-	RNAV 1	Bank angle 25°
005	TF	SUPOM	-	313 (304.8)	14.0	-	+12 000	-	37°21'46.7"N 127°12'17.2"E	-	RNAV 1	-
006	TF	SEL	-	292 (283.0)	13.6	-	-9 000 +8 000	-	37°24'49.0"N 126°55'42.1"E	-	RNAV 1	-
007	TF	DU030	-	302 (293.8)	6.6	-	@8 000	-	37°27'28.2"N 126°48'09.4"E	-	RNAV 1	-
008	TF	DU025	-	298 (289.5)	5.2	-	+7 000	-	37°29'12.0"N 126°42'00.0"E	-	RNAV 1	-
009	TF	DU022	-	287 (278.0)	5.0	-	-	-	37°29'53.6"N 126°35'48.1"E	-	RNAV 1	-
010	TF	DU018	-	324 (315.0)	6.0	-	-	-220	37°34'09.7"N 126°30'26.7"E	-	RNAV 1	-
011	TF	DOKDO	-	054 (045.0)	3.0	-	+4 000	-220	37°36'17.1"N 126°33'07.1"E	-	RNAV 1	IAF

RNAV GUKDO 2U

Serial Number	Path Descriptor	Waypoint Identifier	Fly-over	Course/Track °M(°T)	Distance (NM)	Turn direction	Altitude (ft)	Speed (kt)	Coordinates	VPA/RDH	Navigation specification	Remarks
001	IF	GUKDO	-	-	-	-	+FL 160	-	37°01'10.9"N 127°38'22.6"E	-	RNAV 1	-
002	TF	GU069	-	344 (334.9)	10.0	-	-	-250	37°10'14.9"N 127°33'04.6"E	-	RNAV 1	-
003	TF	DU063	-	314 (304.9)	6.2	-	-	-250	37°13'49.2"N 127°26'39.5"E	-	RNAV 1	-
004	TF	SUPOM	-	313 (304.8)	14.0	-	+12 000	-	37°21'46.7"N 127°12'17.2"E	-	RNAV 1	-
005	TF	SEL	-	292 (283.0)	13.6	-	-9 000 +8 000	-	37°24'49.0"N 126°55'42.1"E	-	RNAV 1	-
006	TF	DU030	-	302 (293.8)	6.6	-	@8 000	-	37°27'28.2"N 126°48'09.4"E	-	RNAV 1	-
007	TF	DU025	-	298 (289.5)	5.2	-	+7 000	-	37°29'12.0"N 126°42'00.0"E	-	RNAV 1	-
008	TF	DU022	-	287 (278.0)	5.0	-	-	-	37°29'53.6"N 126°35'48.1"E	-	RNAV 1	-
009	TF	DU018	-	324 (315.0)	6.0	-	-	-220	37°34'09.7"N 126°30'26.7"E	-	RNAV 1	-
010	TF	DOKDO	-	054 (045.0)	3.0	-	+4 000	-220	37°36'17.1"N 126°33'07.1"E	-	RNAV 1	IAF

SEOUL/Gimpo Intl(RKSS)
RWY 14L/R
RNAV KARBU 2U

AERONAUTICAL DATA TABULATION

Standard Instrument Arrival Procedure Coding Tables

Serial Number	Path Descriptor	Waypoint Identifier	Fly-over	Course/Track M(T)	Distance (NM)	Turn direction	Altitude (ft)	Speed (kt)	Coordinates	VPA/RDH	Navigation specification	Remarks
001	IF	KARBU	-	-	-	-	-	-	37°31'59.0"N 127°39'52.0"E	-	RNAV 1	-
002	TF	EGOBA	-	267 (258.7)	13.9	-	+13 000	-250	37°29'14.7"N 127°22'45.9"E	-	RNAV 1	-
003	TF	SEL	-	267 (258.5)	22.0	-	-9 000 +8 000	-	37°24'49.0"N 126°55'42.1"E	-	RNAV 1	-
004	TF	DU030	-	302 (293.8)	6.6	-	@8 000	-	37°27'28.2"N 126°48'09.4"E	-	RNAV 1	-
005	TF	DU025	-	298 (289.5)	5.2	-	+7 000	-	37°29'12.0"N 126°42'00.0"E	-	RNAV 1	-
006	TF	DU022	-	287 (278.0)	5.0	-	-	-	37°29'53.6"N 126°35'48.1"E	-	RNAV 1	-
007	TF	DU018	-	324 (315.0)	6.0	-	-	-220	37°34'09.7"N 126°30'26.7"E	-	RNAV 1	-
008	TF	DOKDO	-	054 (045.0)	3.0	-	+4 000	-220	37°36'17.1"N 126°33'07.1"E	-	RNAV 1	IAF

Holding Identification	Path Descriptor	Waypoint Identifier	Fly-over	Course/Track M(T)	Time (min)	Turn direction	Altitude (ft)	Speed (kt)	Coordinates	VPA/RDH	Navigation specification	Remarks
RNAV OLMEN 2U	-	DU063	Y	314 (304.9)	1.0	L	-FL 150 +12 000	-230	37°13'49.2"N 127°26'39.5"E	-	RNAV 1	-
	-	DOKDO	Y	324 (314.9)	1.0	R	-5 000 +4 000	-200	37°36'17.1"N 126°33'07.1"E	-	RNAV 1	-
RNAV GUKDO 2U	-	DU063	Y	314 (304.9)	1.0	L	-FL 150 +12 000	-230	37°13'49.2"N 127°26'39.5"E	-	RNAV 1	-
	-	DOKDO	Y	324 (314.9)	1.0	R	-5 000 +4 000	-200	37°36'17.1"N 126°33'07.1"E	-	RNAV 1	-
RNAV KARBU 2U	-	EGOBA	Y	267 (258.7)	1.5	R	-FL 150 +13 000	-250	37°29'14.7"N 127°22'45.9"E	-	RNAV 1	-
	-	DOKDO	Y	324 (314.9)	1.0	R	-5 000 +4 000	-200	37°36'17.1"N 126°33'07.1"E	-	RNAV 1	-

Change : Information of ALT restriction for holding procedure.

INTENTIONALLY

LEFT

BLANK

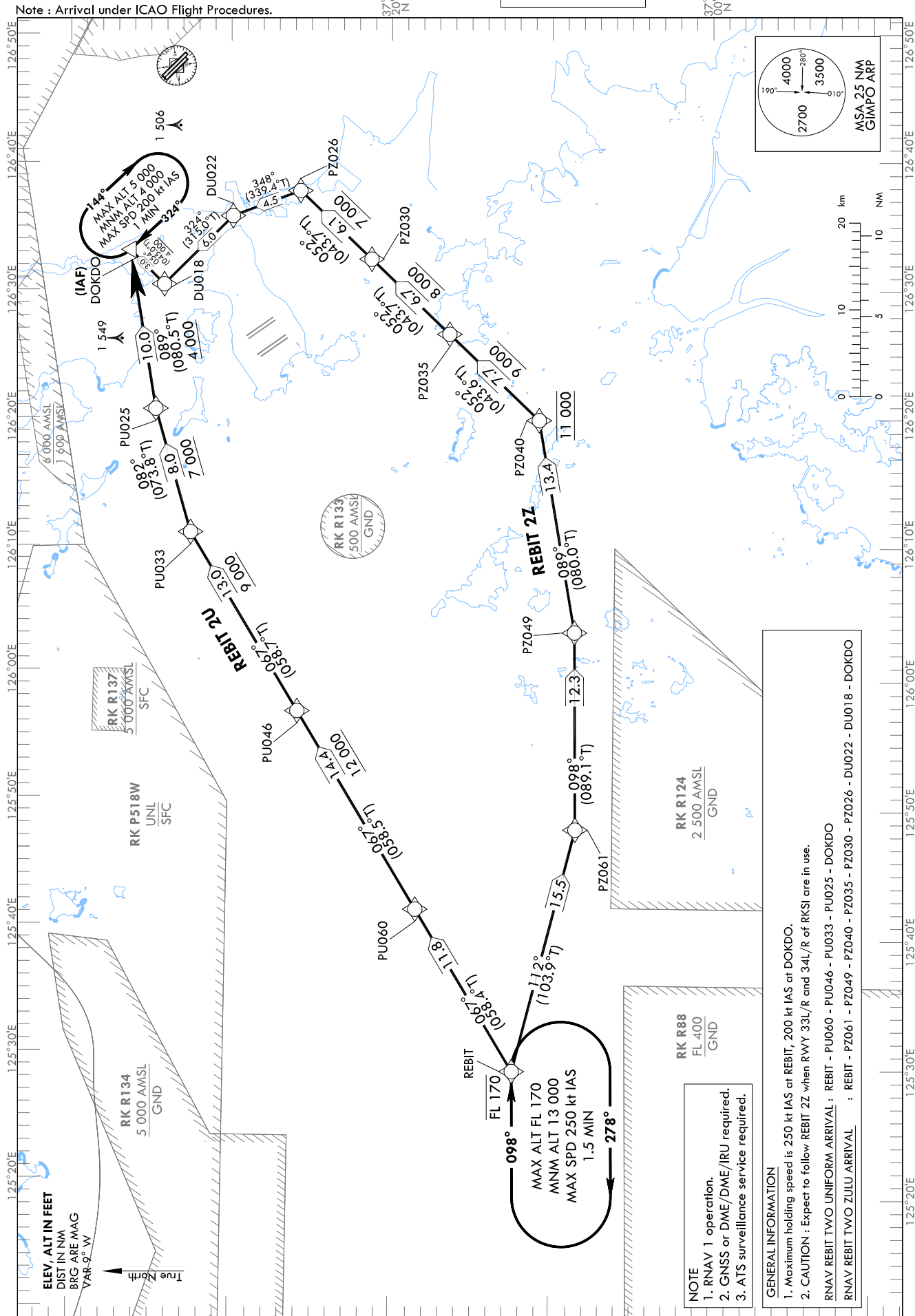
STANDARD ARRIVAL CHART
INSTRUMENT (STAR) - ICAO

TRANSITION ALT 14 000
TRANSITION LVL FL 140

SEOUL APP 119.75
119.1
GIMPO TWR 118.1
118.05

SEOUL/Gimpo Intl(RKSS)
RWY 14L/R
RNAV REBIT 2U, RNAV REBIT 2Z

Note : Arrival under ICAO Flight Procedures.



NOTE
1. RNAV 1 operation.
2. GNSS or DME/DME/IRU required.
3. ATS surveillance service required.

GENERAL INFORMATION
1. Maximum holding speed is 250 kt IAS at REBIT, 200 kt IAS at DOKDO.
2. CAUTION : Expect to follow REBIT 2Z when RWY 33L/R and 34L/R of RKSI are in use.
RNAV REBIT TWO UNIFORM ARRIVAL : REBIT - PU060 - PU046 - PU033 - PU025 - DOKDO
RNAV REBIT TWO ZULU ARRIVAL : REBIT - PZ061 - PZ049 - PZ040 - PZ035 - PZ030 - PZ026 - DU022 - DU018 - DOKDO

Change : Information of ALT restriction for holding procedure and Withdrawal of unnecessary airways.

SEOUL/Gimpo Intl(RKSS)
RWY 14L/R
RNAV REBIT 2U, RNAV REBIT 2Z

AERONAUTICAL DATA TABULATION

Standard Instrument Arrival Procedure Coding Tables

RNAV REBIT 2U												
Serial Number	Path Descriptor	Waypoint Identifier	Fly-over	Course/Track °M(°T)	Distance (NM)	Turn direction	Altitude (ft)	Speed (kt)	Coordinates	VPA/RDH	Navigation specification	Remarks
001	IF	REBIT	-	-	-	-	-FL 170	-	37°12'03.0"N 125°29'12.7"E	-	RNAV 1	-
002	TF	PU060	-	067 (058.4)	11.8	-	-	-	37°18'12.6"N 125°41'46.1"E	-	RNAV 1	-
003	TF	PU046	-	067 (058.5)	14.4	-	+12 000	-	37°25'42.2"N 125°57'09.0"E	-	RNAV 1	-
004	TF	PU033	-	067 (058.7)	13.0	-	+9 000	-	37°32'26.0"N 126°11'04.0"E	-	RNAV 1	-
005	TF	PU025	-	082 (073.8)	8.0	-	+7 000	-	37°34'39.1"N 126°20'42.3"E	-	RNAV 1	-
006	TF	DOKDO	-	089 (080.5)	10.0	-	+4 000	-	37°36'17.1"N 126°33'07.1"E	-	RNAV 1	IAF

RNAV REBIT 2Z												
Serial Number	Path Descriptor	Waypoint Identifier	Fly-over	Course/Track °M(°T)	Distance (NM)	Turn direction	Altitude (ft)	Speed (kt)	Coordinates	VPA/RDH	Navigation specification	Remarks
001	IF	REBIT	-	-	-	-	-FL 170	-	37°12'03.0"N 125°29'12.7"E	-	RNAV 1	-
002	TF	PZ061	-	112 (103.9)	15.5	-	-	-	37°08'17.9"N 125°48'04.6"E	-	RNAV 1	-
003	TF	PZ049	-	098 (089.1)	12.3	-	-	-	37°08'28.1"N 126°03'25.2"E	-	RNAV 1	-
004	TF	PZ040	-	089 (080.0)	13.4	-	@11 000	-	37°10'46.2"N 126°19'55.9"E	-	RNAV 1	-
005	TF	PZ035	-	052 (043.6)	7.7	-	+9 000	-	37°16'22.3"N 126°26'36.8"E	-	RNAV 1	-
006	TF	PZ030	-	052 (043.7)	6.7	-	+8 000	-	37°21'14.9"N 126°32'26.8"E	-	RNAV 1	-
007	TF	PZ026	-	052 (043.7)	6.1	-	+7 000	-	37°25'41.7"N 126°37'46.9"E	-	RNAV 1	-
008	TF	DU022	-	348 (339.4)	4.5	-	-	-	37°29'53.6"N 126°35'48.1"E	-	RNAV 1	-
009	TF	DU018	-	324 (315.0)	6.0	-	-	-220	37°34'09.7"N 126°30'26.7"E	-	RNAV 1	-
010	TF	DOKDO	-	054 (045.0)	3.0	-	+4 000	-220	37°36'17.1"N 126°33'07.1"E	-	RNAV 1	IAF

HOLDING PROCEDURE												
Holding Identification	Path Descriptor	Waypoint Identifier	Fly-over	Course/Track °M(°T)	Time (min)	Turn direction	Altitude (ft)	Speed (kt)	Coordinates	VPA/RDH	Navigation specification	Remarks
RNAV REBIT 2U	-	REBIT	Y	098 (089.1)	1.5	R	-FL 170 +13 000	-250	37°12'03.0"N 125°29'12.7"E	-	RNAV 1	-
	-	DOKDO	Y	324 (314.9)	1.0	R	+5 000 +4 000	-200	37°36'17.1"N 126°33'07.1"E	-	RNAV 1	-
RNAV REBIT 2Z	-	REBIT	Y	098 (089.1)	1.5	R	-FL 170 +13 000	-250	37°12'03.0"N 125°29'12.7"E	-	RNAV 1	-
	-	DOKDO	Y	324 (314.9)	1.0	R	+5 000 +4 000	-200	37°36'17.1"N 126°33'07.1"E	-	RNAV 1	-

Change : Information of ALT restriction for holding procedure.

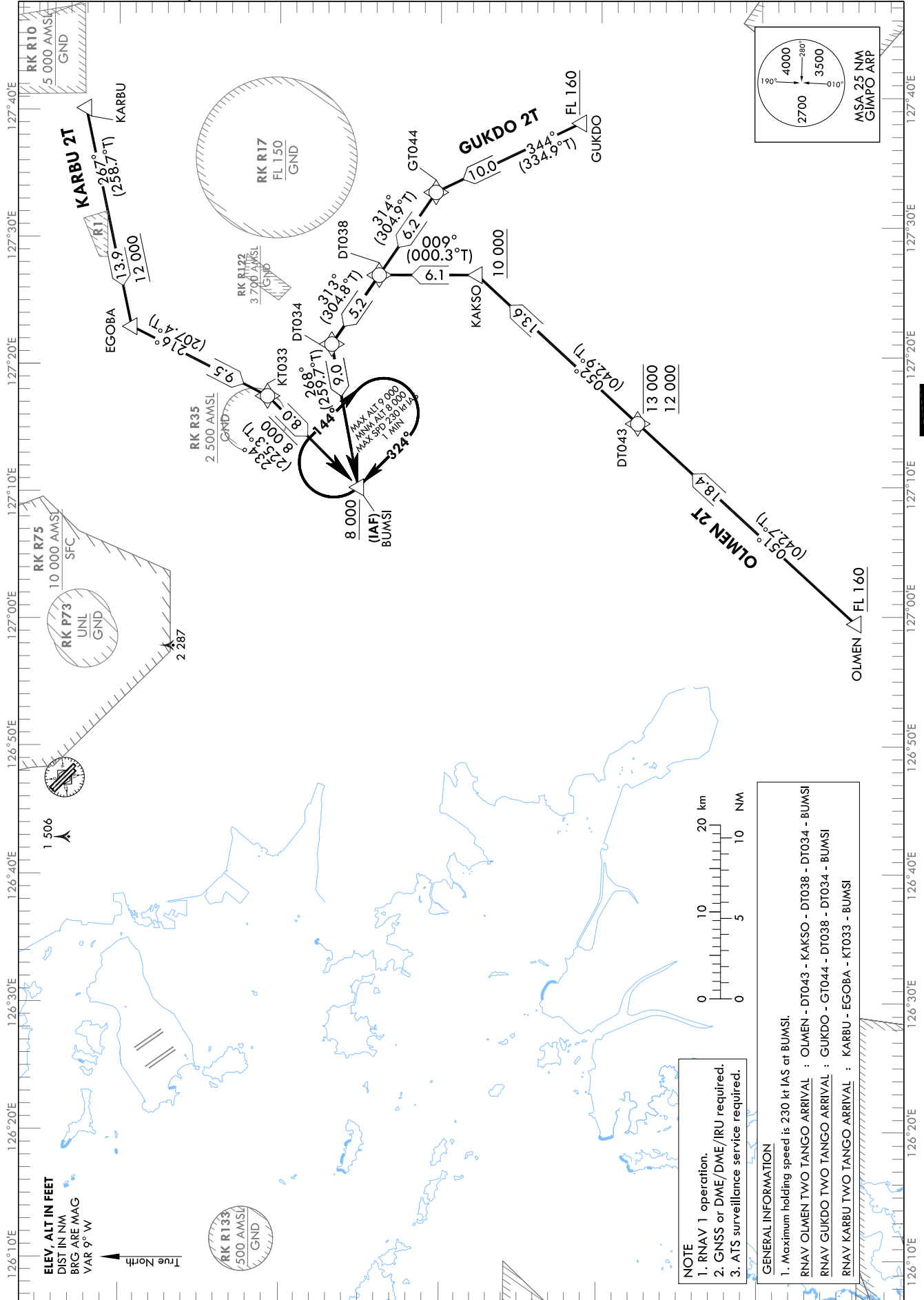
STANDARD ARRIVAL CHART
INSTRUMENT (STAR) - ICAO

TRANSITION ALT 14 000
TRANSITION LVL FL 140

SEOUL APP 119.75
119.1
GIMPO TWR 118.1
118.05

SEOUL/Gimpo Intl(RKSS)
RWY 32L/R
RNAV OLMEN 2T
RNAV GUKDO 2T, RNAV KARBU 2T

Note : Arrival under ICAO Flight Procedure.



Change : Information of ALT restriction for holding procedure and Withdrawal of unnecessary airways.

SEOUL/Gimpo Intl(RKSS)

RWY 32L/R

RNAV OLMEN 2T

RNAV GUKDO 2T, RNAV KARBU 2T

AERONAUTICAL DATA TABULATION

Standard Instrument Arrival Procedure Coding Tables

RNAV OLMEN 2T												
Serial Number	Path Descriptor	Waypoint Identifier	Fly-over	Course/Track °M(°T)	Distance (NM)	Turn direction	Altitude (ft)	Speed (kt)	Coordinates	VPA/RDH	Navigation specification	Remarks
001	IF	OLMEN	-	-	-	-	+F1 160	-	36°44'13.4"N 126°59'27.6"E	-	RNAV 1	-
002	TF	DT043	-	051 (042.7)	18.4	-	-13 000 +12 000	-	36°57'45.7"N 127°15'01.2"E	-	RNAV 1	-
003	TF	KAKSO	-	052 (042.9)	13.6	-	+10 000	-250	37°07'44.6"N 127°26'37.4"E	-	RNAV 1	Bank angle 25°
004	TF	DT038	-	009 (000.3)	6.1	-	-	-250	37°13'49.2"N 127°26'39.5"E	-	RNAV 1	Bank angle 25°
005	TF	DT034	-	313 (304.8)	5.2	-	-	-250	37°16'47.4"N 127°21'18.3"E	-	RNAV 1	Bank angle 25°
006	TF	BUMSI	-	268 (259.7)	9.0	-	+8 000	-	37°15'10.2"N 127°10'09.6"E	-	RNAV 1	IAF

RNAV GUKDO 2T												
Serial Number	Path Descriptor	Waypoint Identifier	Fly-over	Course/Track °M(°T)	Distance (NM)	Turn direction	Altitude (ft)	Speed (kt)	Coordinates	VPA/RDH	Navigation specification	Remarks
001	IF	GUKDO	-	-	-	-	+F1 160	-	37°01'10.9"N 127°38'22.9"E	-	RNAV 1	-
002	TF	GT044	-	344 (334.9)	10.0	-	-	-250	37°10'14.9"N 127°33'04.6"E	-	RNAV 1	-
003	TF	DT038	-	314 (304.9)	6.2	-	-	-250	37°13'49.2"N 127°26'39.5"E	-	RNAV 1	-
004	TF	DT034	-	313 (304.8)	5.2	-	-	-250	37°16'47.4"N 127°21'18.3"E	-	RNAV 1	-
005	TF	BUMSI	-	268 (259.7)	9.0	-	+8 000	-	37°15'10.2"N 127°10'09.6"E	-	RNAV 1	IAF

RNAV KARBU 2T												
Serial Number	Path Descriptor	Waypoint Identifier	Fly-over	Course/Track °M(°T)	Distance (NM)	Turn direction	Altitude (ft)	Speed (kt)	Coordinates	VPA/RDH	Navigation specification	Remarks
001	IF	KARBU	-	-	-	-	-	-	37°31'59.0"N 127°39'52.0"E	-	RNAV 1	-
002	TF	EG08A	-	267 (258.7)	13.9	-	+12 000	-250	37°29'14.7"N 127°22'45.9"E	-	RNAV 1	-
003	TF	KT033	-	216 (207.4)	9.5	-	-	-250	37°20'48.4"N 127°17'17.1"E	-	RNAV 1	-
004	TF	BUMSI	-	234 (225.3)	8.0	-	+8 000	-	37°15'10.2"N 127°10'09.6"E	-	RNAV 1	IAF

HOLDING PROCEDURE													
Holding Identification	Path Descriptor	Waypoint Identifier	Fly-over	Course/Track °M(°T)	Distance (NM)	Turn direction	Time (min)	Altitude (ft)	Speed (kt)	Coordinates	VPA/RDH	Navigation specification	Remarks
RNAV OLMEN 2T	HM	BUMSI	Y	324 (315.2)	1.0	R	1.0	-9 000 +8 000	-230	37°15'10.2"N 127°10'09.6"E	-	RNAV 1	-
RNAV GUKDO 2T	HM	BUMSI	Y	324 (315.2)	1.0	R	1.0	-9 000 +8 000	-230	37°15'10.2"N 127°10'09.6"E	-	RNAV 1	-
RNAV KARBU 2T	HM	BUMSI	Y	324 (315.2)	1.0	R	1.0	-9 000 +8 000	-230	37°15'10.2"N 127°10'09.6"E	-	RNAV 1	-

Change : Information of ALT restriction for holding procedure.

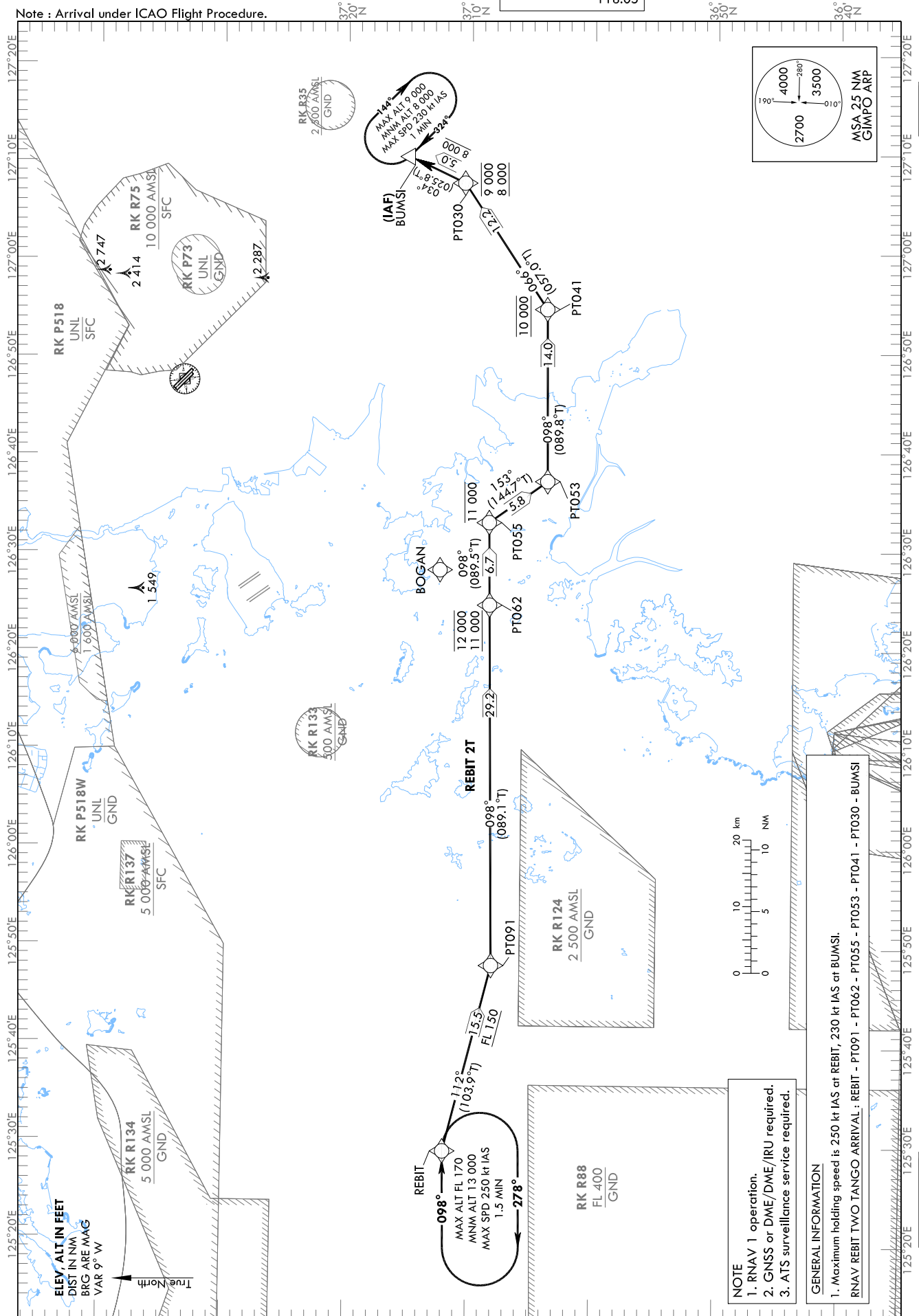
STANDARD ARRIVAL CHART
INSTRUMENT (STAR) - ICAO

TRANSITION ALT 14 000
TRANSITION LVL FL 140

SEOUL APP 119.75
119.1
GIMPO TWR 118.1
118.05

SEOUL/Gimpo Intl(RKSS)
RWY 32L/R
RNAV REBIT 2T

Note : Arrival under ICAO Flight Procedure.



Change : Information of ALT restriction for holding procedure and Withdrawal of unnecessary airways.

SEOUL/Gimpo Intl(RKSS)
RWY 32L/R
RNAV REBIT 2T

AERONAUTICAL DATA TABULATION

Standard Instrument Arrival Procedure Coding Tables

Serial Number	Path Descriptor	Waypoint Identifier	Fly-over	Course/Track °M(°T)	Distance (NM)	Turn direction	Altitude (ft)	Speed (kt)	Coordinates	VPA/RDH	Navigation specification	Remarks
001	IF	REBIT	-	-	-	-	-	-	37°12'03.0"N 125°29'12.7"E	-	RNAV 1	-
002	TF	PT091	-	112 (103.9)	15.5	-	+FL 150	-	37°08'17.9"N 125°48'04.6"E	-	RNAV 1	-
003	TF	PT062	-	098 (089.1)	29.2	-	-12 000 +11 000	-	37°08'38.9"N 126°24'37.4"E	-	RNAV 1	-
004	TF	PT055	-	098 (089.5)	6.7	-	-11 000	-	37°08'42.1"N 126°32'59.3"E	-	RNAV 1	-
005	TF	PT053	-	153 (144.7)	5.8	-	-	-	37°03'58.4"N 126°37'09.6"E	-	RNAV 1	-
006	TF	PT041	-	098 (089.8)	14.0	-	@10 000	-	37°04'00.5"N 126°54'36.0"E	-	RNAV 1	-
007	TF	PT030	-	066 (057.0)	12.2	-	-9 000 +8 000	-	37°10'39.8"N 127°07'26.2"E	-	RNAV 1	-
008	TF	BUMSI	-	034 (025.8)	5.0	-	+8 000	-	37°15'10.2"N 127°10'09.6"E	-	RNAV 1	IAF

HOLDING PROCEDURE

Holding Identification	Path Descriptor	Waypoint Identifier	Fly-over	Course/Track °M(°T)	Time (min)	Turn direction	Altitude (ft)	Speed (kt)	Coordinates	VPA/RDH	Navigation specification	Remarks
RNAV REBIT 2T	HM	REBIT	Y	098 (089.1)	1.5	R	-FL 170 +13 000	-250	37°12'03.0"N 125°29'12.7"E	-	RNAV 1	-
	HM	BUMSI	Y	324 (315.2)	1.0	R	-9 000 +8 000	-230	37°15'10.2"N 127°10'09.6"E	-	RNAV 1	-

Change : Information of ALT restriction for holding procedure.

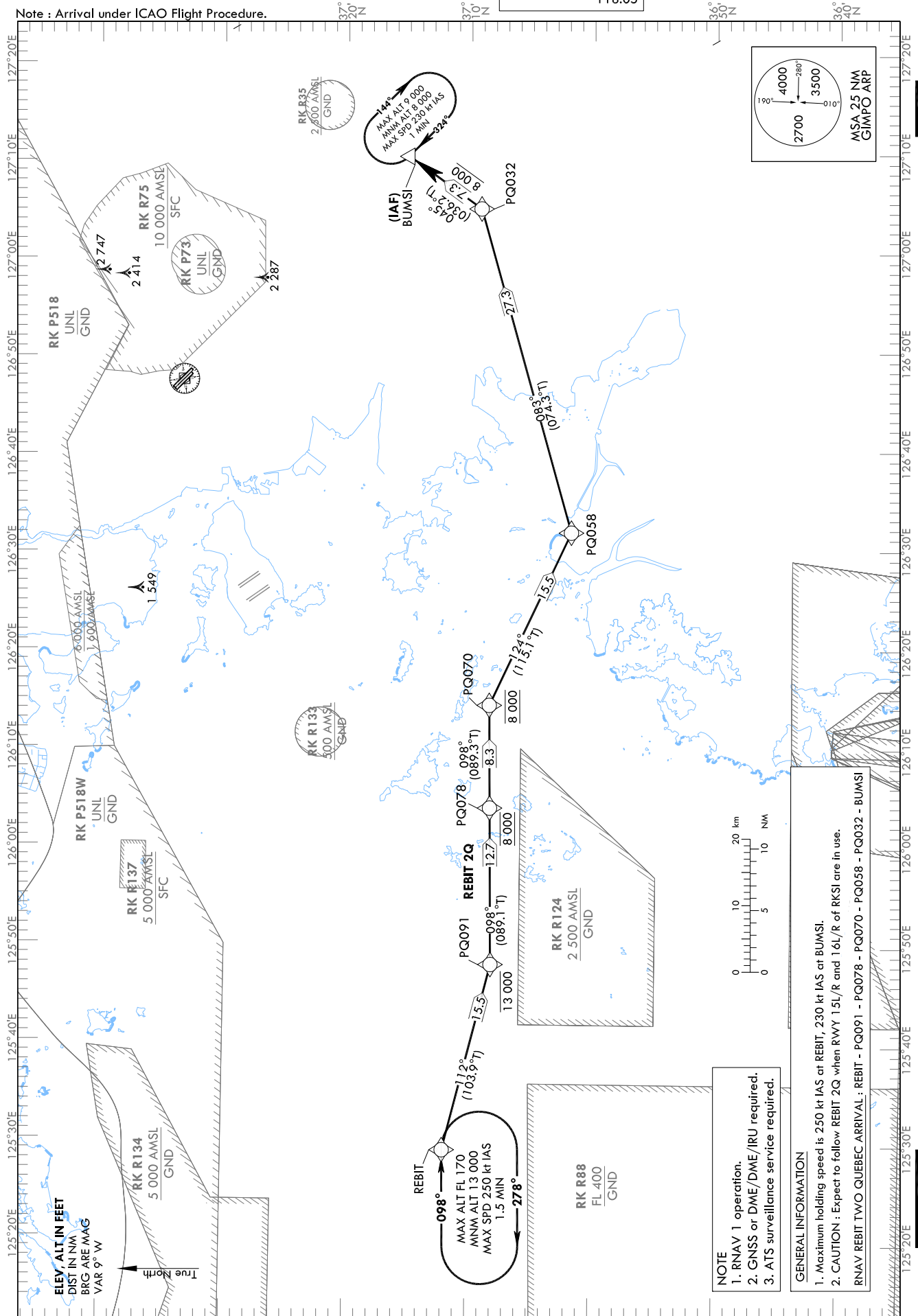
STANDARD ARRIVAL CHART
INSTRUMENT (STAR) - ICAO

TRANSITION ALT 14 000
TRANSITION LVL FL 140

SEOUL APP 119.75
GIMPO TWR 118.1
118.05

SEOUL/Gimpo Intl(RKSS)
RWY 32L/R
RNAV REBIT 2Q

Note : Arrival under ICAO Flight Procedure.



NOTE
1. RNAV 1 operation.
2. GNSS or DME/DME/IRU required.
3. ATS surveillance service required.

GENERAL INFORMATION
1. Maximum holding speed is 250 kt IAS at REBIT, 230 kt IAS at BUMSI.
2. CAUTION : Expect to follow REBIT 2Q when RWY 15L/R and 16L/R of RKSI are in use.
RNAV REBIT TWO QUEBEC ARRIVAL : REBIT - PQ091 - PQ078 - PQ070 - PQ058 - PQ032 - BUMSI

Change : Information of ALT restriction for holding procedure and Withdrawal of unnecessary airways.

SEOUL/Gimpo Intl(RKSS)
RWY 32L/R
RNAV REBIT 2Q

AERONAUTICAL DATA TABULATION

Standard Instrument Arrival Procedure Coding Tables

Serial Number	Path Descriptor	Waypoint Identifier	Fly-over	Course/Track °M(°T)	Distance (NM)	Turn direction	Altitude (ft)	Speed (kt)	Coordinates	VPA/ RDH	Navigation specification	Remarks
001	IF	REBIT	-	-	-	-	-	-	37°12'03.0"N 125°29'12.7"E	-	RNAV 1	-
002	TF	PQ091	-	112 (103.9)	15.5	-	-13 000	-	37°08'17.9"N 125°48'04.6"E	-	RNAV 1	-
003	TF	PQ078	-	098 (089.1)	12.7	-	@8 000	-	37°08'28.4"N 126°03'57.4"E	-	RNAV 1	-
004	TF	PQ070	-	098 (089.3)	8.3	-	@8 000	-	37°08'34.2"N 126°14'23.0"E	-	RNAV 1	-
005	TF	PQ058	-	124 (115.1)	15.5	-	-	-	37°01'58.7"N 126°31'54.3"E	-	RNAV 1	-
006	TF	PQ032	-	083 (074.3)	27.3	-	-	-	37°09'17.5"N 127°04'47.1"E	-	RNAV 1	-
007	TF	BUMSI	-	045 (036.2)	7.3	-	+8 000	-	37°15'10.2"N 127°10'09.6"E	-	RNAV 1	IAF

Holding Identification	Path Descriptor	Waypoint Identifier	Fly-over	Course/Track °M(°T)	Time (min)	Turn direction	Altitude (ft)	Speed (kt)	Coordinates	VPA/ RDH	Navigation specification	Remarks
RNAV REBIT 2Q	HM	REBIT	Y	098 (089.1)	1.5	R	-FL 170 +13 000	-250	37°12'03.0"N 125°29'12.7"E	-	RNAV 1	-
	HM	BUMSI	Y	324 (315.2)	1.0	R	-9 000 +8 000	-230	37°15'10.2"N 127°10'09.6"E	-	RNAV 1	-

Change : Information of ALT restriction for holding procedure.

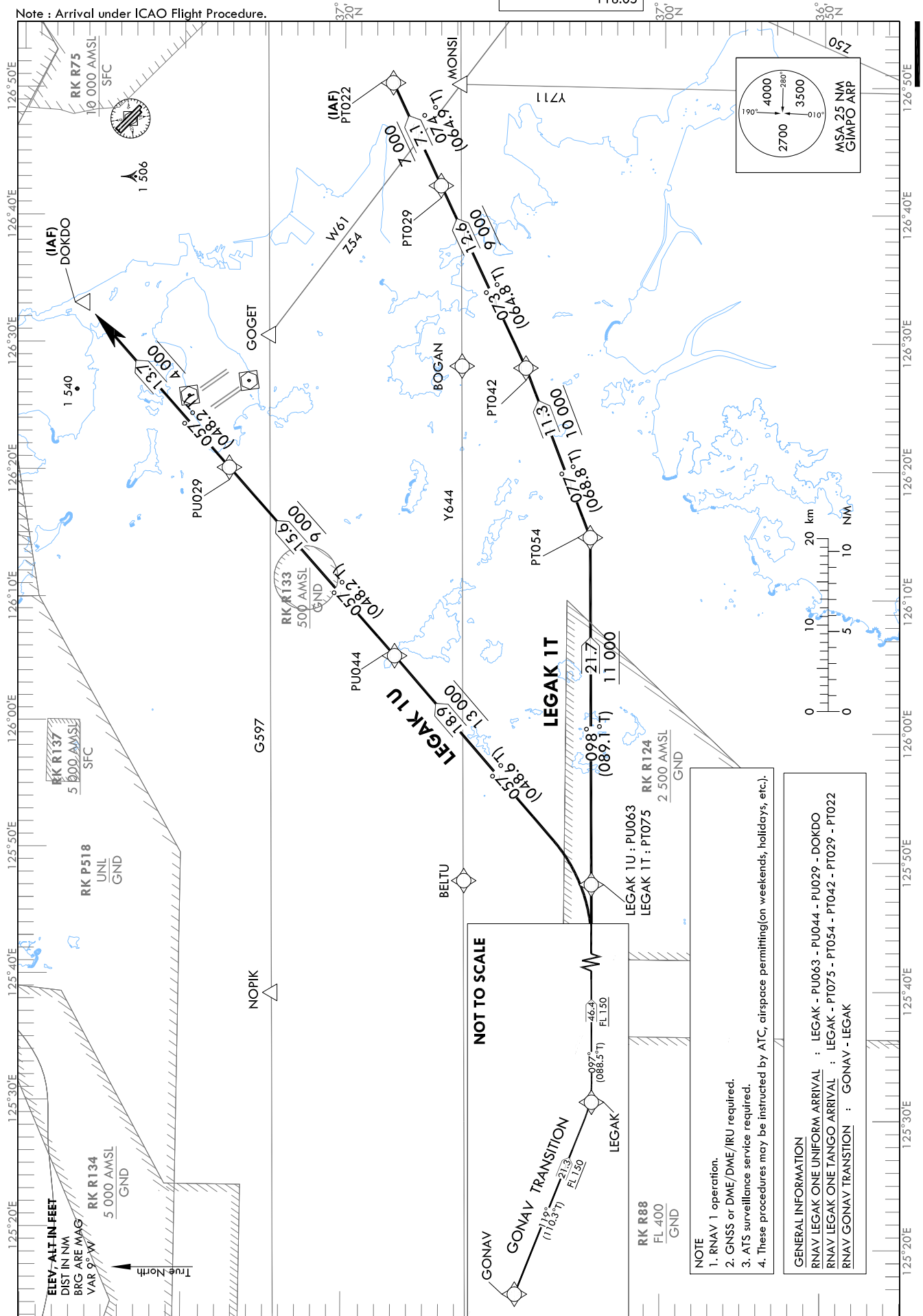
STANDARD ARRIVAL CHART
INSTRUMENT (STAR) - ICAO

TRANSITION ALT 14 000
TRANSITION LVL FL 140

SEOUL APP 119.75
119.1
GIMPO TWR 118.1
118.05

SEOUL/Gimpo Intl(RKSS)
RWY 14L/R, RWY 32L/R
RNAV LEGAK 1U, RNAV LEGAK 1T

Note : Arrival under ICAO Flight Procedure.



- NOTE**
1. RNAV 1 operation.
 2. GNSS or DME/DME/IRU required.
 3. ATS surveillance service required.
 4. These procedures may be instructed by ATC, airspace permitting (on weekends, holidays, etc.).

GENERAL INFORMATION

RNAV LEGAK ONE UNIFORM ARRIVAL : LEGAK - PU063 - PU044 - PU029 - DOKDO
 RNAV LEGAK ONE TANGO ARRIVAL : LEGAK - PT075 - PT054 - PT042 - PT029 - PT022
 RNAV GONAV TRANSITION : GONAV - LEGAK

Change : Information of RK P73.

SEOUL/Gimpo Intl(RKSS)
RWY 14L/R, RWY 32L/R
RNAV LEGAK 1U, RNAV LEGAK 1T
RNAV GONAV TRANSITION

AERONAUTICAL DATA TABULATION

Standard Instrument Arrival Procedure Coding Tables

RNAV LEGAK 1U

Serial Number	Path Descriptor	Waypoint Identifier	Fly-over	Course/Track °M(°T)	Distance (NM)	Turn direction	Altitude (ft)	Speed (kt)	Coordinates	VPA/RDH	Navigation specification	Remarks
001	IF	LEGAK	-	-	-	-	+FL 150	-	37°03'21.0"N 124°49'51.1"E	-	RNAV 1	-
002	TF	PU063	-	097 (088.5)	46.4	-	+FL 150	-	37°04'17.6"N 125°47'50.3"E	-	RNAV 1	-
003	TF	PU044	-	057 (048.6)	18.9	-	+13 000	-	37°16'44.9"N 126°05'33.1"E	-	RNAV 1	-
004	TF	PU029	-	057 (048.2)	15.6	-	+9 000	-	37°27'10.1"N 126°20'12.3"E	-	RNAV 1	-
005	TF	DOKDO	-	057 (048.4)	13.7	-	+4 000	-	37°36'17.1"N 126°33'07.1"E	-	RNAV 1	IAF

RNAV LEGAK 1T

Serial Number	Path Descriptor	Waypoint Identifier	Fly-over	Course/Track °M(°T)	Distance (NM)	Turn direction	Altitude (ft)	Speed (kt)	Coordinates	VPA/RDH	Navigation specification	Remarks
001	IF	LEGAK	-	-	-	-	+FL 150	-	37°03'21.0"N 124°49'51.1"E	-	RNAV 1	-
002	TF	PT075	-	097 (088.5)	46.4	-	+FL 150	-	37°04'17.6"N 125°47'50.3"E	-	RNAV 1	-
003	TF	PT054	-	098 (089.1)	21.7	-	+11 000	-	37°04'34.8"N 126°14'54.2"E	-	RNAV 1	-
004	TF	PT042	-	077 (068.8)	11.3	-	+10 000	-	37°08'40.3"N 126°28'06.7"E	-	RNAV 1	-
005	TF	PT029	-	073 (064.8)	12.6	-	+9 000	-	37°14'00.7"N 126°42'19.8"E	-	RNAV 1	-
006	TF	PT022	-	074 (064.9)	7.1	-	+7 000	-	37°17'00.6"N 126°50'21.9"E	-	RNAV 1	IAF

RNAV GONAV TRANSITION

Serial Number	Path Descriptor	Waypoint Identifier	Fly-over	Course/Track °M(°T)	Distance (NM)	Turn direction	Altitude (ft)	Speed (kt)	Coordinates	VPA/RDH	Navigation specification	Remarks
001	IF	GONAV	-	-	-	-	-	-	37°10'48.4"N 124°24'52.6"E	-	RNAV 1	-
002	TF	LEGAK	-	119 (110.3)	21.3	-	+FL 150	-	37°03'21.0"N 124°49'51.1"E	-	RNAV 1	-